



USER MANUAL

4K 3x3 Art Video Wall Controller

Enjoy the vivid world

Introduction

This 4K 3X3 Art VIDEO WALL CONTROLLER , support HDMI/USB3.0 input . via USB 3.0 port video can complete variety of screens splicing effects. The resolution of USB3.0 input is up to 4K and high-definition output to monitor. It is widely used in teaching, restaurants,station and other places.

As a video wall controller, the main function is divided a single complete HDMI HD image signal to 9 parts and distribute to 9 display units (Rear projection screens, LCD TV.etc.), which composed to be a dynamic image wall. The operation is plug and play, does not need the control software.



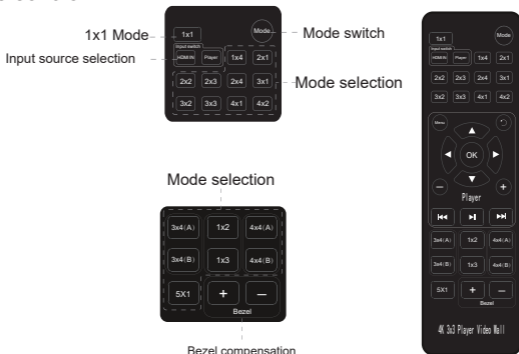
Features

- * Support HDMI/USB3.0 video source input;
- * Support 9-ways HDMI output;
- * Support multiple splicing modes, easy to handle, plug and play;
- * Support discretionary splicing;
- * Automatically calculates optimal resolution to monitor;
- * Effectively solve the splicing deformation;
- * Perfectly show images without stretching;
- * Only support Win10 system 64 bit;
- * Support screen any degree rotation;

Specifications

HDMI input resolution	the highest support 3840x2160/30Hz
HDMI output resolution	support 1920x1080/60Hz (one port)
Support audio format	stereo
Input cable length	≤8m AWG26 HDMI standard cable
Output cable length	≤10M,AWG26 HDMI standard cable
Max working current	2.6A
Power adapter specifications	input AC (50Hz, 60Hz) 100V-240V Output 12V DC/3A
Operating temperature range	(-10℃ ~ +45℃)
Dimension (L x W x H)	305x185x35(mm)
Weight	1739g

remote control:

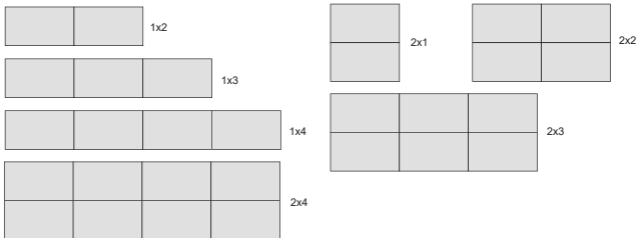


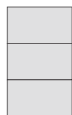
Physical interface diagram



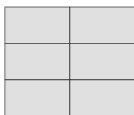
Ports	Function description
RS232	RS232 port, For general splicing setup
Switch	Switch choosing button, tap to switch the signal source between the external HDMI source or USB3.0 video source input
Mode	Switch splicing mode button
IR	Infrared receiving window, for receiving order of remote control
Input	USB3.0 signal source input
R/L	3.5mm headphone Jack, analog audio stereo output
ON/OFF	Power switch
Output1-9	Video wall controller HDMI signal output port, steady blue light indicates that the video wall controller and the displays are successfully connected
HDMI IN	HDMI video signal source input (Indicator red light USB 3.0 input ; Indicator blue light HDMI input)
DC/12V	DC 12V power port, for connect with 12V/3A power adaptor

Common splicing mode reference

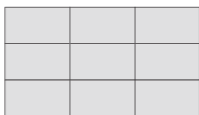




3x1



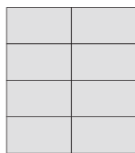
3x2



3x3

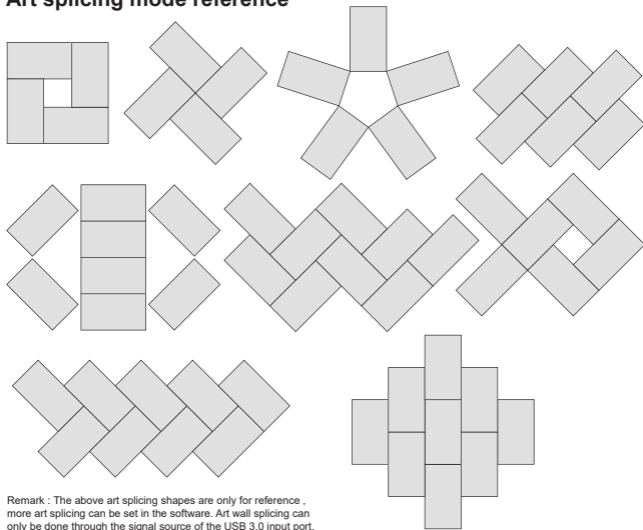


4x1

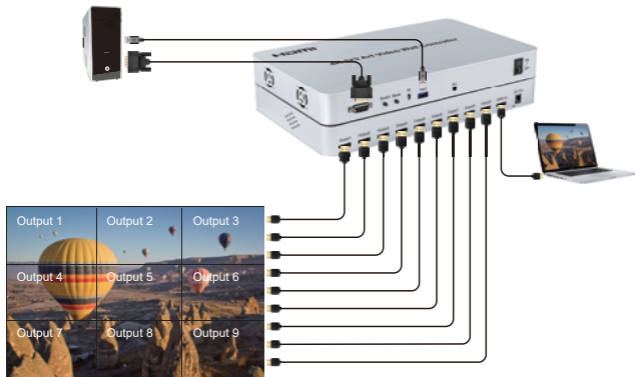


4x2

Art splicing mode reference



Connection diagram



Application scene



Outdoor video wall



Shopping mall video wall



Monitor room

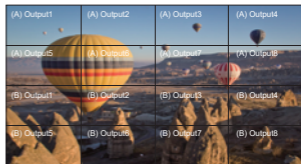
Package include

- | | | | |
|-------------------------------------|-----|-------------------------|-----|
| 1: 4K 3x3 Art Video Wall Controller | 1PC | 3: 12V DC power adaptor | 1PC |
| 2: Remote control | 1PC | 4: USB 3.0 cable | 1PC |
| | | 5: User manual | 1PC |

Attachment: The product can be cascaded by two sets to complete 3X4 and 4X4 modes
 (Using remote control to set.)



3x4

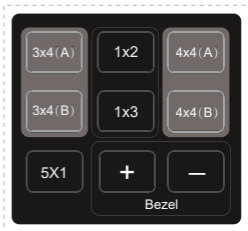


4x4

Note: Using remote control to set the splicing mode:

3X4 mode: video wall controller A chooses 3x4(A);
 video wall controller B chooses 3x4(B);

4X4 mode: video wall controller A chooses 4x4(A);
 video wall controller B chooses 4x4(B);



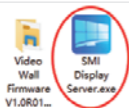
Art splicing software installation:

Using art splicing function need to install two software :

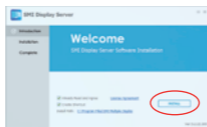
- 1) SMI Display Server;
- 2) Art Video Wall.

SMI Display Server (This software is a control program, no operation interface)

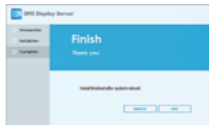
- 1: Click SMI button twice:



- 2: Click install:

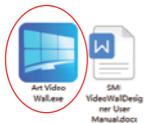


- 3: Complete software installation:
(Restart the computer, then run)

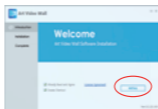


Art Video Wall

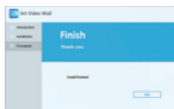
- 1: Click Art Video wall.exe button twice



- 2: Click install:



- 3: Complete software installation:



Software operation: (For example : windmill shape splicing)

Open splicing setting software

1. Art splicing template preset: Click button 'T'



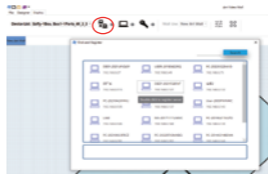
2. Click template preset twice: 



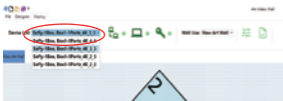
3. Switch to "Deploy" and save the file:



4. Select the computer that needs to splice:
(This computer needs to install the control program and be in the same local area network)



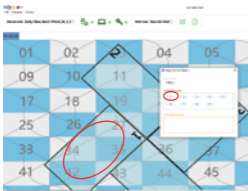
5. Choose the splicing equipment:



6. Adjust position, click this button '⌂'



7. Confirm position and output port:



8. Click '' , confirm setting finished:



For more detailed software operation, please refer to the operation manual.
(The software operation manual is in the installer compressed package)

NOTE: Minimum requirements for PC:

- 1) Processor: Intel's Core i5 -8500;
- 2) Ram: 16GB (2x8GB dual-channel);
- 3) System: Windows 10.