



# User Manual

## 4-Port HDMI Multimedia KVMP Switch with Audio

---

GCS1794  
PART NO. M1086-b

[www.iogear.com](http://www.iogear.com)

©2018 IOGEAR. All Rights Reserved. PKG-M1086-b IOGEAR, the IOGEAR logo, MiniView®, VSE are trademarks or registered trademarks of IOGEAR, Inc. Microsoft and Windows are registered trademarks of Microsoft Corporation. IBM is a registered trademark of International Business Machines, Inc. Macintosh, G3/G4 and iMac are registered trademarks of Apple Computer, Inc. IOGEAR makes no warranty of any kind with regards to the information presented in this document. All information furnished here is for informational purposes only and is subject to change without notice. IOGEAR, Inc. assumes no responsibility for any inaccuracies or errors that may appear in this document.

## Table of Contents

Package Contents	4
Requirements	5
GCS1794 Overview	6
Installation	9
LED Indication	13
Port Switching	14
Port Switching via Hotkeys	16
Auto Scanning	18
Hotkey Setting Mode (HSM)	19
Mac Keyboard Emulation	21
Factory Default Hotkeys Settings	23
Firmware Upgrade	24

Compliance Information	29
Limited Warranty	30
Contact	31

## Package Contents

- 1 x 4-Port HDMI KVMP Switch
- 4 x HDMI KVM Cables (4 for GCS1794)
- 1 x Firmware Upgrade Cable
- 1 x Power Adapter
- 1 x Installation Guide
- 1 x Warranty Card

## Requirements

### Console

- A display with an HDMI or DVI input\*
- A USB Keyboard and Mouse

### Source Devices

- Source devices with HDMI or DVI outputs\*
- USB port (if source supports keyboard, mouse or peripheral)

### Optional Analog Audio

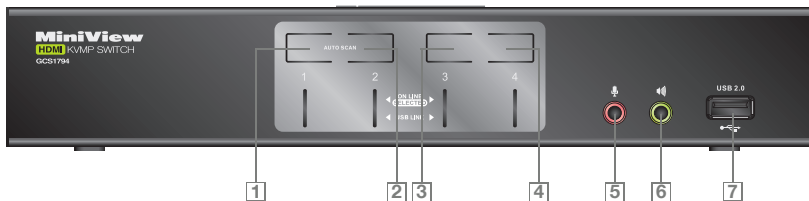
- Analog audio connections for speakers and mic.

\*Note: To connect to a DVI computer or monitor, please use the GHDMIFDVIM adapter, available at [www.iogear.com](http://www.iogear.com)

# GCS1794 Overview

## Front View

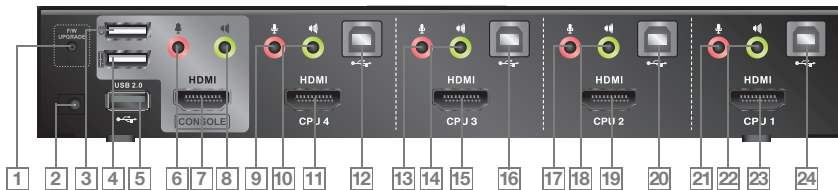
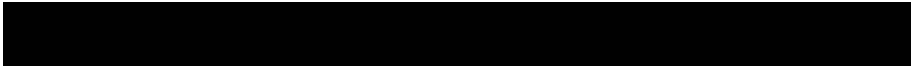
1. Port 1 Pushbutton
2. Port 2 Pushbutton
3. Port 3 Pushbutton
4. Port 4 Pushbutton
5. Front Panel Console Mic. Port
6. Front Panel Console Analog Audio Port
7. Front Panel USB 2.0 Peripheral Sharing Port





## Rear View

1. Firmware Upgrade Port
2. DC Power Jack
3. Console USB Mouse Port
4. Console USB Keyboard Port
5. USB 2.0 Peripheral Sharing Port
6. Console Mic. Port
7. Console HDMI Video Port
8. Console Analog Audio Port
9. CPU4 Mic. Port
10. CPU4 Analog Audio Port
11. CPU4 HDMI Video Port
12. CPU4 USB Port
13. CPU3 Mic. Port
14. CPU3 Analog Audio Port
15. CPU3 HDMI Video Port
16. CPU3 USB Port
17. CPU2 Mic. Port
18. CPU2 Analog Audio Port
19. CPU2 HDMI Video Port
20. CPU2 USB Port
21. CPU1 Mic. Port
22. CPU1 Analog Audio Port
23. CPU1 HDMI Video Port
24. CPU1 USB Port





# Installation

## Step 1

Please make sure your source devices and display are powered off before you start.

## Step 2

Plug the power adapter into the power outlet and connect it to the DC power jack from the KVM.



### Step 3

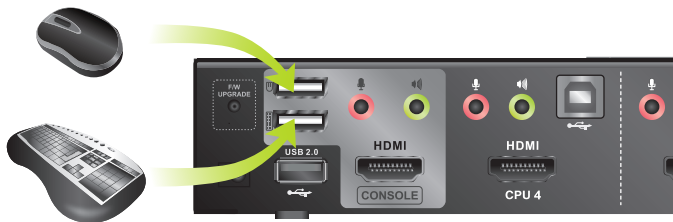
Connect the HDMI cable from your display to the console HDMI port.



\*If your display has a DVI input instead of HDMI, please connect the HDMI (F) to DVI (M) Adapter (Model No: GHDMIFDVIM) between your HDMI cable and your DVI connection from your display.

#### Step 4

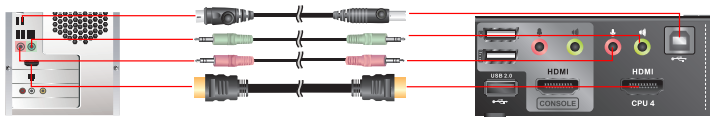
Connect your USB keyboard and mouse to the console USB keyboard port and console USB mouse port.



\*If you are using PS/2 keyboard and mouse, please use the included PS/2 to USB converter. Simply connect the PS/2 keyboard and mouse to the PS/2 keyboard and mouse port from the converter, then connect the USB port to the console USB keyboard port.

## Step 5

Connect a set of your HDMI KVM cable from the multimedia KVMP switch to each of your source devices – HDMI cable to the HDMI output and USB cable to open USB port from your source device. Connect the optional analog audio and mic connectors to your source device and if your device does not pass audio through HDMI cable.



\*If your source device has a DVI output instead of HDMI, please connect the HDMI (F) to DVI (M) Adapter (Model No: GHDMIFDVIIM) between your source device and your HDMI cable.

\*\*If your source device does not support USB keyboard, mouse or peripheral, simply leave the USB connection unconnected.

## Final Step

Turn on your source devices.

## LED Indication

	LED	Description
Online / Selected*	Dim Orange	A device is connected to the KVMP switch but the port is not on focus
Online / Selected*	Bright Orange	The specific port has focus on the KVM (Keyboard, video and mouse)
USB Link	Green	The specific port has focus on the USB peripheral sharing ports

\*Note: Online status is detected by the USB connection from the KVM cable; therefore, if your source device does not support USB, the KVM will not have online status light up as dim orange. When that source is selected, the LED will light up as dim orange instead of bright orange.

## Port Switching

Simply press the front panel Pushbutton from the multimedia KVM switch or trigger hotkeys from your keyboard.

### Port Switching via Front Panel Pushbutton

Function	Description
Switch all focus (KVM, analog audio and USB) to a specific port	Press and hold the correspond push button for 2 seconds for the desire port that you wish to switch focus to.
Switch KVM focus to a specific port	Press the correspond push button once for the desire port that you wish to switch focus to.
Switch analog audio focus to a specific port	Press the correspond push button twice for the desire port that you wish to switch focus to.
Switch USB focus to a specific port	Press the correspond push button 3 times for the desire port that you wish to switch focus to.

## Port Switching via Front Panel Pushbutton (Alternative Settings)\*

Function	Description
Switch all focus (KVM, analog audio and USB) to a specific port	Press the correspond push button once for the desire port that you wish to switch focus to.
Switch KVM focus to a specific port	Press and hold the correspond push button for 2 seconds for the desire port that you wish to switch focus to.
Switch analog audio focus to a specific port	Press the correspond push button twice for the desire port that you wish to switch focus to.
Switch USB focus to a specific port	Press the correspond push button 3 times for the desire port that you wish to switch focus to.

\*Note: Please see page 23 about how to change the front panel pushbutton to the alternative settings.

# Port Switching via Hotkeys

## Port Switching via Hotkeys

Hotkeys	Description
[Scroll Lock] [Scroll Lock] [Enter]	Switch all focus (KVM, analog audio and USB) to the next port
[Scroll Lock] [Scroll Lock] [n] [Enter]	Switch all focus (KVM, analog audio and USB) to port n*
[Scroll Lock] [Scroll Lock] [k] [Enter]	Switch KVM focus to the next port
[Scroll Lock] [Scroll Lock] [n] [k] [Enter]	Switch KVM focus to port n*
[Scroll Lock] [Scroll Lock] [s] [Enter]	Switch analog audio focus to the next port**
[Scroll Lock] [Scroll Lock] [n] [s] [Enter]	Switch analog audio focus to port n* **
[Scroll Lock] [Scroll Lock] [u] [Enter]	Switch USB focus to the next port
[Scroll Lock] [Scroll Lock] [n] [u] [Enter]	Switch USB focus to port n*



## Port Switching via Hotkeys

[Scroll Lock] [Scroll Lock] [n] [k] [u] [Enter]

Switch KVM and USB focus to port n\*

[Scroll Lock] [Scroll Lock] [n] [k] [s] [Enter]

Switch KVM and analog audio focus to port n\* \*\*

[Scroll Lock] [Scroll Lock] [n] [u] [s] [Enter]

Switch USB and analog audio focus to port n\*

\*Note: n is an interval that stands for the Port number

k stands for KVM focus

s stands for analog audio focus

u stands for USB focus

\*\*Note: If the audio is going through the HDMI cable along with the video signal, this hotkey WILL NOT switch the audio focus. But instead, the audio will follow the KVM focus.

## Auto Scanning

You can either activate Autoscan Mode via front panel push button or hotkeys.

	Function	Description
Front Panel Push Button	Press and hold port 1 and port 2 Pushbutton simultaneously for 2 seconds to activate Autoscan Mode*	Activate Autoscan mode. It will cycle from port to port every 5 seconds (default)
Hotkeys	[Scroll Lock] [Scroll Lock] [a] [Enter]	Activate Autoscan mode. It will cycle from port to port every 5 seconds (default)
Hotkeys	[Scroll Lock] [Scroll Lock] [a] [n] [Enter]	Activate Autoscan mode. It will cycle from port to port every n seconds**

\*Note: Autoscan Mode from front panel push button will be scanning a port every 5 seconds by default. If you wish to have the Autoscan Mode be scanning with different time interval, please refer to trigger Autoscan Mode from hotkeys.

\*\*Note: n is an interval between 1 and 99 that stands for the time (in second) desire for scanning each port.

## Hotkey Setting Mode (HSM)







Hotkey	Description
1. Press and hold [Ctrl] 2. Press and release [F12] 3. Release [Ctrl]	Invoking hotkey setting mode
Invoke HSM, then press [h]	Change the HSM invocation keys from [Ctrl] to [Num Lock] ([Clear] key on Mac Keyboard) and from [F12] to [-]
Invoke HSM, then press [t]	Switch port switching hotkey sequence between [Scroll Lock] [Scroll Lock] and [Ctrl] [Ctrl]
Invoke HSM, then press [F2]	Enables Mac keyboard emulation
Invoke HSM, then press [F10]	Auto-detect the keyboard operating platform (for PC compatible systems). Activates Pass Through Keyboard Mode (keystrokes are sent directly to the computer instead of through the Mac emulator).
Invoke HSM, then press [F4]	List hotkey settings – simply invoke the hotkey and then open a text editor, such as notepad, and use the Paste function to display the hotkey settings.
Invoke HSM, then press [F5]	USB Reset

Invoke HSM, then press [b]	Toggle hotkey beepers on or off
Invoke HSM, then press [x] [Enter]	Disable or enable port switching hotkey
Invoke HSM, then press [u] [p] [g] [r] [a] [d] [e] [Enter]	Activate Firmware Upgrade Mode – Front panel KVM LED will flash indicating Firmware Upgrade Mode is activated.
Invoke HSM, then press [r] [Enter]	Restore default settings
Invoke HSM, then press [d]	Capture and store video information on specific port
Invoke HSM, then press [s]	Toggles between default and alternative front panel pushbutton operation settings. See page 18 for details.
Invoke HSM, then press [m]	Enable or disable mouse emulation
Invoke HSM, then press [F1]	Reset keyboard and mouse under some special OS' that do not support USB 2.0

\*Note: To exit HSM manually, press Esc or spacebar.

## Mac Keyboard Emulation

The PC compatible (101/104 key) keyboard can emulate the functions of the Mac keyboard. The emulation mappings are listed in the table below.

PC Keyboard	Mac Keyboard
[Shift]	Shift
[Ctrl]	Ctrl
	
[Ctrl] [1]	
[Ctrl] [2]	
[Ctrl] [3]	
[Ctrl] [4]	

[Alt]	Alt
[Print Screen]	F13
[Scroll Lock]	F14
	=
[Enter]	Return
[Backspace]	Delete
[Insert]	Help
[Ctrl] 	F15

\*Note: When using key combinations, press and release the first key (Ctrl), then press and release the second key.

## Factory Default Hotkeys Settings

Function	Default
Port Switching	[Scroll Lock] [Scroll Lock]
Invoking HSM	[Ctrl] [F12]
Auto Scan Interval	5 Seconds
Beeper	On
Keyboard Operating Platform	PC Compatible
Port Switching Keys	Enabled
Mouse Emulation	On

# Firmware Upgrade

Note: In order to perform a firmware upgrade, you need to use a computer that's not connected to the KVM.

## **Step 1**

Connect the provided firmware upgrade cable to the firmware upgrade port of the KVM and the serial port of your computer. Connect power adapter to your power outlet and the KVM.

## **Step 2**

Go to [www.iogear.com](http://www.iogear.com) to download the latest available firmware or the specific firmware that you wish to upgrade to.

## **Step 3**

Shut down all the computers that are connected to the KVM. Then Invoke Firmware Upgrade Mode. (Please refer to Hotkeys Setting Mode section.)

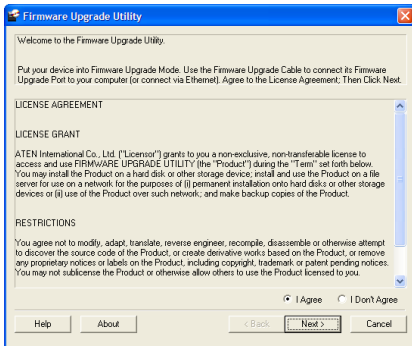
## **Step 4**

Extract the file with WinRAR or compatible software. Then double click on the execute file to begin with the Firmware Upgrade Utility.



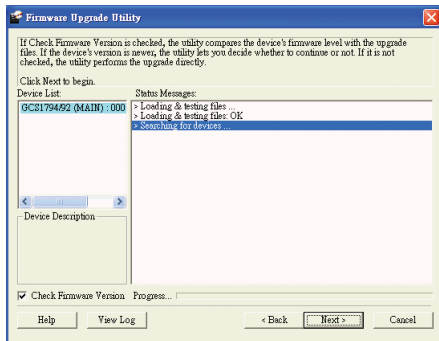
## Step 5

Read the License Agreement and click “I Agree” then click “Next” if you wish to continue with the firmware upgrade. Otherwise, click “Cancel” to exit.



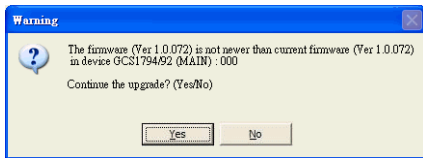
## Step 6

Choose the correct KVM that you wish to perform firmware upgrade from the “Device List” and then click “Next” to continue. Then the Firmware Upgrade Utility will verify if there is a KVM connected to the computer by the firmware upgrade cable. (Check Firmware Version checkbox is optional)



## Step 7

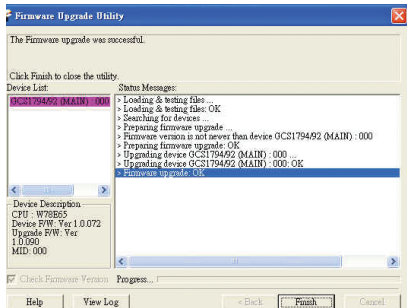
If you have checked the “Check Firmware Version” checkbox, then the utility will check the current firmware that is on your KVM. If the current firmware is newer than the firmware that you wish to upgrade to, a window will popup and prompt you to ask if you wish to proceed. Simply click “Yes” to start the upgrade and “No” to cancel the upgrade.



Note: If you did not check the “Check Firmware Version” checkbox, utility will perform the upgrade automatically no matter what version of firmware you have in the KVM.

## Step 8

When the firmware upgrade is done, you will see “Firmware upgrade OK” in the “Status Messages” window. Then simply click “Finish” to complete the whole firmware upgrade process.



## Final Step

No the KVM will reset by itself and it will be ready for usage after the rest.

## Compliance Information

### **FCC Statement**

This equipment has been tested and found to comply with the limits for a Class A digital device, pursuant to Part 15 of the FCC Rules. These limits are designed to provide reasonable protection against harmful interference when the equipment is operated in a commercial environment. This equipment generates, uses, and can radiate radio frequency energy and, if not installed and used in accordance with the instruction manual, may cause

harmful interference to radio communications. Operation of this equipment in a residential area is likely to cause harmful interference in which case the user will be required to correct the interference at his own expense. The device complies with Part 15 of the FCC Rules. Operation is subject to the following two conditions:

- (1) this device may not cause harmful interference, and
- (2) this device must accept any interference received, including interference that may cause undesired operation.

### **FCC Caution**

Any changes or modifications not expressly approved by the party responsible for compliance could void the user's authority to operate this equipment.

### **CE Compliance**

This equipment is compliant with Class A of CISPR 32. In a residential environment this equipment may cause radio interference.

# Limited Warranty

## Warranty Information

This product carries a 3 Year Limited Warranty. For the terms and conditions of this warranty, please go to <http://www.iogear.com/support/warranty>

Register online at <https://www.iogear.com/registration>

Important Product Information

Product Model \_\_\_\_\_

Serial Number \_\_\_\_\_

## Contact

### WE'RE HERE TO HELP YOU! NEED ASSISTANCE SETTING UP THIS PRODUCT?

Make sure you:

1. Visit [www.iogear.com](http://www.iogear.com) for more product information
2. Visit [www.iogear.com/support](http://www.iogear.com/support) for live help and product support

#### **IOGEAR**

[www.iogear.com](http://www.iogear.com)

[iogear.custhelp.com](http://iogear.custhelp.com)

[support@iogear.com](mailto:support@iogear.com)





